

# Sunma Inspection & Clean

## ST-70 Portable Microscope



### Feature

- Single way to have loop focus control, stir the wheel with fingers simply to complete operation.
- 400× Magnification Ability, less more 1um Resolution.
- Bright and Contrast Adjustment for indoors/outdoors operation.
- 27 assorted of tips available to have both PC and APC end face inspection.
- 60°angle tips to test multiple types of connectors.
- Ability to inspect MPO/MTP etc., PC and APC multiple cores end face.
- Precise cone contact to reach 98% alignment consistency.
- USB feature to connect PC and data software analyze.
- Stable for more than 8 hrs continuous work with less than 3% failure.

### Overview

ST-70 features advantages of probe adjustment and alignment, displaying high definition and clear image for inspection. It tailors for the fiber operator and manufacturer in special quick end face testing, committing to serve you the best.



60 Angle to test



LC-APC Female test



27 assorted tips available



SC-APC Female test

# Sunma Inspection & Clean

## Tips Selection



### PC Type Tips

To test 1.25 and 2.5mm ferrule or bulk-head mounted connectors as SC、FC、ST、E2000、LC、MU etc PC endface.



### APC Type Tips

To test 1.25 and 2.5mm ferrule or bulk-head mounted APC connectors, as type of 1.25/APC-M、2.5/APC-M、FC/APC-F、SC/APC-F、LC/APC-F、E2000/APC-F etc APC endface.



### Angle Type Tips

To test male or female end face in specific hard-to-access places, as example of female adapters at the bottom of patch cord. The tips combines 60°base tip to other angle way for testing and additional function tips. Related model as SC/PC-F60、FC/PC-F60、LC/APC-F60、E2000/APC-F60、SC/APC-F60、FC/APC-F60、LC/APC-F60、E2000/APC-F60.

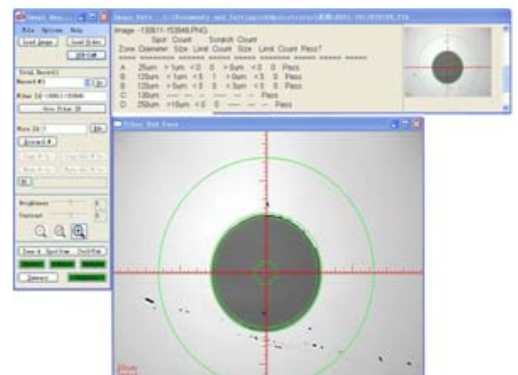


### Multiple-cores Tips

To test female end face of multiple cores as type of MPO/PC-F、MPO/APC-F、MTP/PC-F、MTP/APC-F and MTRJ-F.

## Optional Function

1.USB features to connect the PC and 2.EFD3.0 software to have end face data analyze.



# Sunma Inspection & Clean

## Specification

Component	Argument	Value
ST-70A Probe	Magnification Ability	400X
	Resolution( $\mu\text{m}$ )	0.5
	View of Field(mm)	0.40*0.31
	CCD Sensor	1/3 ,600Line
	L*W*H Size (mm)	165*28*40
	Weight(Kg)	0.15
	Storage Temperature	-18°C-35°C
3.5 Inch Display	End face size in display(mm)	21.25
	Pixel	230000
	Battery Volume(mAh)	3500
	Working Hours	9h
	Weight(Kg)	0.8
USB Feature	To connect PC and have real-time inspection through USB feature with 70A probe, no need for additional power cord.	
EFD3.3.0 Version Data Analyze Software	<ul style="list-style-type: none"> <li>• Verification of Fiber end face quality, pass or fail judgment based on different standard international criteria IEC/IPC or customize.</li> <li>• Pdf or Excel Report file generated to have scratch, spot etc defects measured and counted around the fiber end face.</li> <li>• Analyze Support in image, video and real-time inspection.</li> </ul>	

## Purchase Guide

	Item	Quantity (pcs)
Standard Configuration	ST-70A Probe	1
	3.5 Inch Display	1
	Standard tips: SC-P-F, FC-P-F, LC-P-F, 2.5mm-M	1 respectively each type
	Power Cord	1
	Soft Case	1
Optional Configuration	USB Feature Function	
	EFD3.3.0 Version Data Analyze Software	

Contact

Phone: 86-27-8720 8018

86-27-5177 8865

Mail: sales@sunmafiber.com

Web: [www.sunmafiber.com/](http://www.sunmafiber.com/)